

Архангельск (8182)63-90-72  
Астана (7172)727-132  
Астрахань (8512)99-46-04  
Барнаул (3852)73-04-60  
Белгород (4722)40-23-64  
Брянск (4832)59-03-52  
Владивосток (423)249-28-31  
Волгоград (844)278-03-48  
Вологда (8172)26-41-59  
Воронеж (473)204-51-73  
Екатеринбург (343)384-55-89  
Иваново (4932)77-34-06

Ижевск (3412)26-03-58  
Иркутск (395)279-98-46  
Казань (843)206-01-48  
Калининград (4012)72-03-81  
Калуга (4842)92-23-67  
Кемерово (3842)65-04-62  
Киров (8332)68-02-04  
Краснодар (861)203-40-90  
Красноярск (391)204-63-61  
Курск (4712)77-13-04  
Липецк (4742)52-20-81  
Киргизия (996)312-96-26-47

Магнитогорск (3519)55-03-13  
Москва (495)268-04-70  
Мурманск (8152)59-64-93  
Набережные Челны (8552)20-53-41  
Нижний Новгород (831)429-08-12  
Новокузнецк (3843)20-46-81  
Новосибирск (383)227-86-73  
Омск (3812)21-46-40  
Орел (4862)44-53-42  
Оренбург (3532)37-68-04  
Пенза (8412)22-31-16  
Казахстан (772)734-952-31

Пермь (342)205-81-47  
Ростов-на-Дону (863)308-18-15  
Рязань (4912)46-61-64  
Самара (846)206-03-16  
Санкт-Петербург (812)309-46-40  
Саратов (845)249-38-78  
Севастополь (8692)22-31-93  
Симферополь (3652)67-13-56  
Смоленск (4812)29-41-54  
Сочи (862)225-72-31  
Ставрополь (8652)20-65-13  
Таджикистан (992)427-82-92-69

Сургут (3462)77-98-35  
Тверь (4822)63-31-35  
Томск (3822)98-41-53  
Тула (4872)74-02-29  
Тюмень (3452)66-21-18  
Ульяновск (8422)24-23-59  
Уфа (347)229-48-12  
Хабаровск (4212)92-98-04  
Челябинск (351)202-03-61  
Череповец (8202)49-02-64  
Ярославль (4852)69-52-93

<https://danabrevini.nt-rt.ru> || [dnp@nt-rt.ru](mailto:dnp@nt-rt.ru)

## КАТАЛОГ

# Large, High-Precision Gears and Gear Components

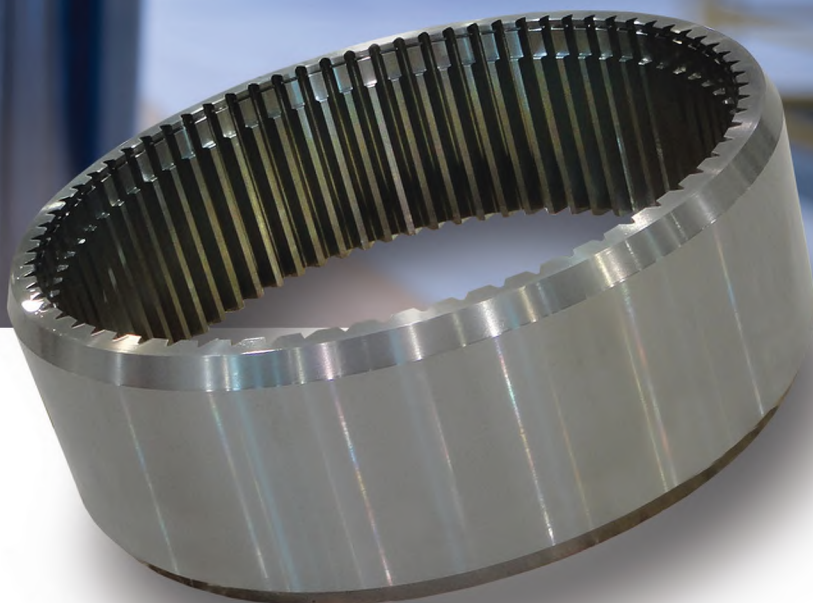
Brevini Gear Systems offers innovative solutions to complex geartrain challenges with state-of-the-art technologies in engineering, manufacturing and validation.

We are committed to meeting your technical, quality and delivery requirements for R&D, quality assurance, serial production or remanufacturing at a competitive price.

### Component Assembly and Validation

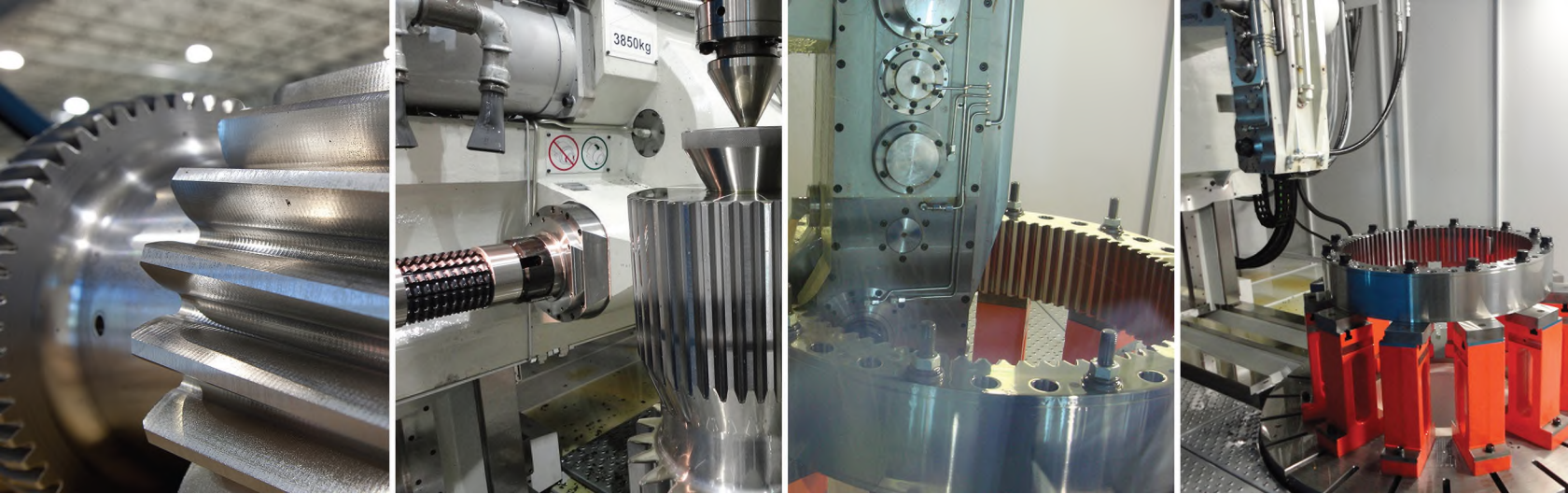
Brevini Gear Systems has experienced staff with assembly and validation background coupled with state-of-the-art facilities to provide fully validated gear boxes and complex drive systems.

From inspections and tolerance checks to full power durability, operational checks and performance development (including vibration, sound power, contact patterns, temperatures and pressures), our validation capabilities will meet your technical, quality



and delivery requirements for R&D, quality assurance, serial production, or re-manufacturing at a competitive price.

With flexible input/output centerline locations and dynamic load testing (active front end inverter technology) capabilities, our test stand can validate drive systems rated up to: 6.4 mW input power, input shaft speed range between 1200 to 2000 rpm and maximum input shaft torque: 51000 Nm.



## Planet Gears, Helical Gears, Sun Pinions, Large Gearshafts

### External Gear Processing

#### Profile Milling/Gear Hobbing

- 1,7300mm [68.11"] Max Diameter
- 1,000mm [39.4"] Max Face Width

#### Gear Shaping

- 1,200mm [47.24"] Max Diameter
- 200mm [7.87"] Max Face Width
- Electronic Guide for Helical Gears

#### Precision External Gear Grinding

- 2,400mm [94.50"] Max Diameter
- 1,000mm [39.4"] Max Face Width
- On-board inspection capability

Max DP	0.75
Max Module	35
Max OD	1730mm [68.10"]
Max Face Width	1000mm [40.00"]
Precision (AGMA)	2015-1-A01 Grade A3
Precision (DIN)	DIN-3962 Quality-4
Heat Treatment	Carburizing, Nitriding, Induction Hardening

## Large Precision Internal Ring Gears

### Internal Gear Processing

#### Profile Milling

- 2,400mm [94.50"] Max Diameter
- 1,000mm [39.4"] Max Face Width

#### Gear Shaping

- 1,200mm [47.24"] Max Diameter
- 200mm [7.87"] Max Face Width

#### Electronic Guide for Helical Gear Shaping

- Precision Internal Gear Grinding
- 2,400mm [94.50"] Max Diameter
- 1,000mm [39.4"] Max Face Width
- On-board inspection capability

Max DP	0.85
Max Module	30
Max OD	2400mm [94.50"]
Max Face Width	1000mm [40.00"]
Precision (AGMA)	2015-1-A01 Grade A3
Precision (DIN)	DIN-3962 Quality-4
Heat Treatment	Carburizing, Nitriding, Induction Hardening

Архангельск (8182)63-90-72  
 Астана (7172)727-132  
 Астрахань (8512)99-46-04  
 Барнаул (3852)73-04-60  
 Белгород (4722)40-23-64  
 Брянск (4832)59-03-52  
 Владивосток (423)249-28-31  
 Волгоград (844)278-03-48  
 Вологда (8172)26-41-59  
 Воронеж (473)204-51-73  
 Екатеринбург (343)384-55-89  
 Иваново (4932)77-34-06

Ижевск (3412)26-03-58  
 Иркутск (395)279-98-46  
 Казань (843)206-01-48  
 Калининград (4012)72-03-81  
 Калуга (4842)92-23-67  
 Кемерово (3842)65-04-62  
 Киров (8332)68-02-04  
 Краснодар (861)203-40-90  
 Красноярск (391)204-63-61  
 Курск (4712)77-13-04  
 Липецк (4742)52-20-81  
 Киргизия (996)312-96-26-47

Магнитогорск (3519)55-03-13  
 Москва (495)268-04-70  
 Мурманск (8152)59-64-93  
 Набережные Челны (8552)20-53-41  
 Нижний Новгород (831)429-08-12  
 Новокузнецк (3843)20-46-81  
 Новосибирск (383)227-86-73  
 Омск (3812)21-46-40  
 Орел (4862)44-53-42  
 Оренбург (3532)37-68-04  
 Пенза (8412)22-31-16  
 Казахстан (772)734-952-31

Пермь (342)205-81-47  
 Ростов-на-Дону (863)308-18-15  
 Рязань (4912)46-61-64  
 Самара (846)206-03-16  
 Санкт-Петербург (812)309-46-40  
 Саратов (845)249-38-78  
 Севастополь (8692)22-31-93  
 Симферополь (3652)67-13-56  
 Смоленск (4812)29-41-54  
 Сочи (862)225-72-31  
 Ставрополь (8652)20-65-13  
 Таджикистан (992)427-82-92-69

Сургут (3462)77-98-35  
 Тверь (4822)63-31-35  
 Томск (3822)98-41-53  
 Тула (4872)74-02-29  
 Тюмень (3452)66-21-18  
 Ульяновск (8422)24-23-59  
 Уфа (347)229-48-12  
 Хабаровск (4212)92-98-04  
 Челябинск (351)202-03-61  
 Череповец (8202)49-02-64  
 Ярославль (4852)69-52-93